

ANNUAL REPORT | 2018/19





CONTENTS

2	TABLE OF CONTENTS
3	LOOK HOW FAR WE'VE COME
4	EXECUTIVE MESSAGE
5	BOARD OF TRUSTEES AND COMMITTEES
6	STRATEGIC OBJECTIVES
7	SUNRISE GRANT RECIPIENTS 2018
11	ENDOWMENT FUNDS
13	CELEBRATING OUR DONORS
19	CELEBRATING OUR DONORS SUPPORTERS

"Giving or leaving money to the Sunrise Foundation is a fantastic way to support your local community and leave a legacy for generations to come."

Sir Stephen Tindall.

LOOK HOW FAR WE'VE COME



\$3.8m

Funds invested



\$3.5m

Promise in wills



\$188.000

Granted to our
community



1.25

Full time staff
supported by 11 volunteers



34

Special interest funds



42

Regular and workplace
giving donors

The Sunrise Foundation Financial
Statements year ended 31 March
2019 are available on our website.

EXECUTIVE MESSAGE

The Sunrise Foundation (Sunrise) is a community endowment foundation. We are governed by a local voluntary board, are community-focused and are striving to build a permanent endowment fund which will benefit our local community, forever.

This financial year has been transformative for Sunrise, we received our largest bequest to date which, along with other donations, saw our endowments increase from \$2.1 million to \$3.8 million.

Bob and Aileen Harris gifted a \$1.3 million legacy to our community with a bequest from their estate. An endowment fund has been set up in their names and the income from their fund will be granted to causes of their choosing every year, forever.

Many others joined Bob and Aileen to show support to our local community. Donors to Sunrise don't have to be wealthy to make a difference. Large or small, one-off or ongoing, all giving has impact.

Sunrise's endowment funds grew this year through donations and bequests, regular giving by automatic payment or Sunrise Workplace Giving, and transfer of funds from other charitable trusts and incorporated societies.

At \$1.4 million the General Fund is our largest endowment fund. The income from the General Fund is distributed to applicants in our annual funding round. We welcome applications from charities and community organisations that have a charitable purpose in Tairāwhiti-Gisborne (the area covered by Gisborne District Council).

Many donors recognise that needs in our community will change over time and are committed to helping build the General Fund to ensure it will be in great shape to respond to our communities needs as they change.

Our donors don't give to Sunrise they 'give through us' to causes that are important to them. If they wish to, they can choose where the income from their donation is directed, through one of our special interest endowment funds.

In response to requests by donors we established six new special interest funds this year, bringing the total number to 34.

At Sunrise donors can support causes that are both close to home, and close to their heart

A highlight of our year was the gifting of grants worth \$79,714 to 35 charitable causes throughout Tairāwhiti-Gisborne.

Since we launched four years ago we have awarded 102 grants across the arts, education, environment, health, social services and sports causes, with a total value of \$187,785.

When donors give through Sunrise their donation is invested and grown, earning interest so it can become a long-term reliable funding stream that supports local causes year on year – ensuring our donors charitable giving has a bigger impact.

The Sunrise Investments Committee, working with investment managers JMI Wealth, continued to take a conservative approach when investing donated funds and were pleased with earnings for the 12 month period to 31 March 2019 of \$110,782 at a 3.5 percent annualised rate of return.

As a community foundation Sunrise can only retain a maximum of 1 percent of endowment value each year to cover operating costs.

Until we grow endowments to where we are self-sufficient we have been fortunate to have the support of establishment funders Eastland Community Trust, J N Williams Memorial Trust and Clark Charitable Trust, who assisted with operating costs for our first five years of operation.

We would like to acknowledge Eastland Community Trust for the grant of \$400,000 they contributed this financial year which will assist with operating costs over the five financial years 2020-2024.

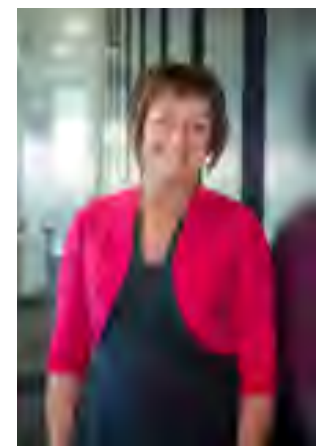
This establishment funding has been key to our early success, allowing us to concentrate on our strategic objectives to grow our endowment funds so we can grant more back to those in need in our community.

We appreciate this immense support as we strive to build a powerful taonga (treasure) for our community for generations to come.

We love where we live and we know we're not the only ones. Our success and the impact we have already been able to achieve in our community would not be possible without the generosity of the many donors that have joined us on our journey so far and we thank them all.



JOHN CLARKE QSO, JP
CHAIR



GLENDA STOKES
EXECUTIVE OFFICER

BOARD OF TRUSTEES



JOHN CLARKE QSO JP
CHAIR



LILIAN TANGAERE
BALDWIN



RICHARD BRIANT



COLIN CHRISTIE



DAVID CLARK



JUNE HALL



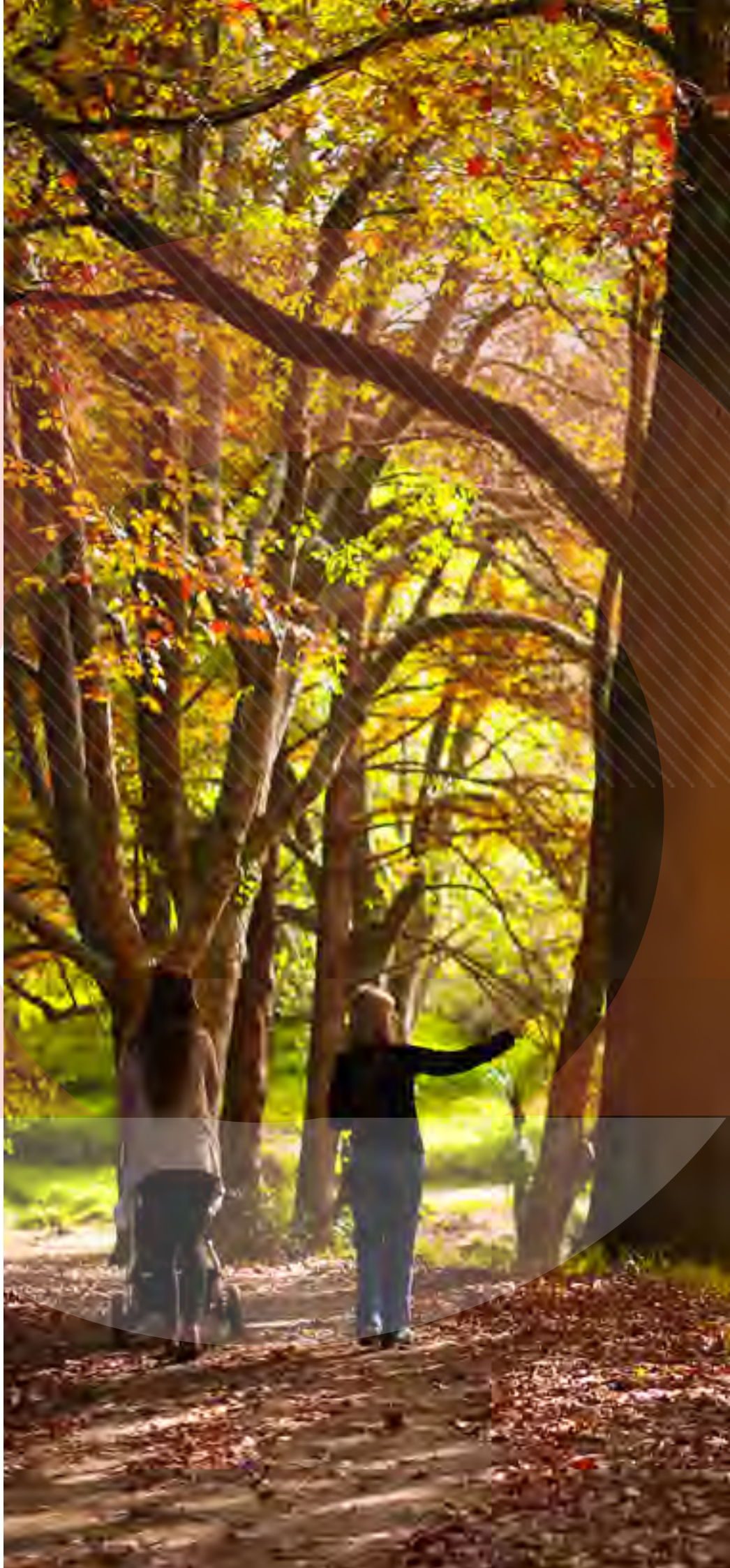
DAME BRONWEN
HOLDSWORTH DNZM



JOE MARTIN



REWETI ROPIHA



SUNRISE COMMITTEES

The Sunrise Investments Committee



DAVID CLARK, COLIN CHRISTIE FCA AND
RICHARD MONTGOMERY FCA

The Sunrise Grants Committee



DAVID CLARK, LESLYNNE JACKSON, RICHARD
BRIANT, ROB DYMOCK AND COLIN CHRISTIE
(ABSENT LILIAN TANGAERE BALDWIN)

We appreciate the support of
our voluntary board and
committee members.

OUR VISION

Local giving for local needs

OUR MISSION

To connect people who care with causes that matter,
to strengthen our local community forever

STRATEGIC OBJECTIVES

1. Grow a substantial perpetual fund
2. Sustain a culture of giving
3. Build strong partnerships and alliances
4. Sound governance and management
5. Increase funds available to distribute as grants
6. To be the funder of choice for social, environmental and cultural initiatives in Tairāwhiti-Gisborne

The Sunrise Foundation is a charitable trust (CC50590) established to receive gifts and legacies to be invested in the form of endowments for the lasting benefit of local charities, community organisations and worthy causes.





Life Education Trust uses state of the art technology to deliver the health curriculum in our schools. They visit primary and intermediate schools throughout Tairāwhiti-Gisborne and deliver their programmes to 6,500 children in 60 schools and 12 pre-schools.

They used their grant from Sunrise to ensure their programmes remain accessible to all children, particularly those at risk.

SUNRISE GRANT RECIPIENTS 2018

In our fourth funding round we gifted 35 grants to arts, education, environment, health, social services and sports causes throughout Tairāwhiti-Gisborne (the area covered by Gisborne District Council).

The causes that received grants in our fourth funding round are:

Art in Public Places	Pākirikiri Marae
Barnardos Gisborne	Red Cross Gisborne
Citizens Advice Bureau Gisborne	Seasons of Growth
City of Gisborne Cadet Unit	SLSNZ Eastern Region
Eastwoodhill Arboretum #	Supergrans Tairāwhiti
EIT Students Association #	Tairāwhiti Beneficiary Advocacy Trust
Gisborne Budget Advisory Service	Tairāwhiti Community Law Centre
Gisborne Craft & Care	Tairāwhiti Community Voice
Gisborne International Music Competition	Tauawhi Mens Centre
Gisborne Rowing Club	Te Hapara Family Service
Gisborne Volunteer Centre	Te Ora Hau Te Tairāwhiti
Hearing Assistance #	Victim Support Tairāwhiti
Life Education Trust	Waikanae Surf Lifesaving Club #
Mangapapa Union Church	Waikohu Health Fund #
Midway Surf Lifesaving Club #	Wainui Surf Lifesaving Club #

Grants from special interest funds

Grants funded by the income from named endowment funds

Gisborne East Coast Cancer Society (Gavin McFarlane Fund)
 Historic Places Tairāwhiti (Dame Bronwen and Dr Peter Holdsworth Family Fund)
 Hospice Tairāwhiti # (Gavin McFarlane Fund and Rosemary Johnson Fund)

SPECIAL INTEREST FUND GRANTS

New scholarships for Tairāwhiti students

When Tairāwhiti Polytechnic merged with EIT Hawkes Bay the Tairāwhiti Students Association was wound up and the proceeds were transferred to the EIT Students Association (EITSA) Tairāwhiti.

To secure those funds for the future benefit of students in our district they established the EITSA Tairāwhiti Endowment Fund at Sunrise.

Every year they will receive a grant from their fund from which they will award multiple scholarships across the academic year.

Congratulations to the inaugural scholarship recipients Amanda Taylor, Bachelor of Social Work and Bessie McLaren, Bachelor of Nursing.



Bessie McLaren



Amanda Taylor



The team at Supergrans help move whanau in crisis to new homes. In the past they had to beg and borrow trailers from family and friends, or do multiple trips in their own personal vehicles.

That's all in the past now they have a new trailer purchased with the help of a grant from Sunrise.



Extra income welcome at Wainui

This year Wainui SLSC used their grant from the Surf Lifesaving Gisborne fund to help cover the salary of Communications Officer, Tess McCormick (pictured here with Andrew Putnam WSLSC Chair).

Tess started the role in April 2018, the first paid administration role in over 8 years. It's certainly paid off, after Tess joined they saw memberships increase by 70 percent and won a new IRB in the BP Vote the Boat Competition.

Pākirikiri Wānanga

Pākirikiri Wānanga used their Sunrise grant for the Puketahuna Fencing Project. Fifteen students aged 15-17 gained 19 L2 Unit Standards while learning to fence the wetlands and stop wild cattle from further tramping and polluting them.



Hearing Associations great work continues

When the Hearing Association closed they used the residual funds to establish the Hearing Assistance Fund at Sunrise. There are four funding rounds a year, where individuals who are hearing impaired and organisations that are involved in education or projects which help hearing impaired people, can apply for financial assistance.

Jake Callaghan was the first recipient of a grant from the Hearing Assistance Fund. Despite having hearing difficulties for years this is the first hearing aid he has owned and he is really pleased with the difference it has made.

Concert Under the Leaves

Although the weather didn't play its part, a hardy and enthusiastic audience gathered under the pohutukawas at Marina Park to watch Concert Under the Leaves, a free community event by Gisborne International Music Competition.

It was a great opportunity for Gisborne people to experience international quality music and was made possible with a grant from Sunrise.



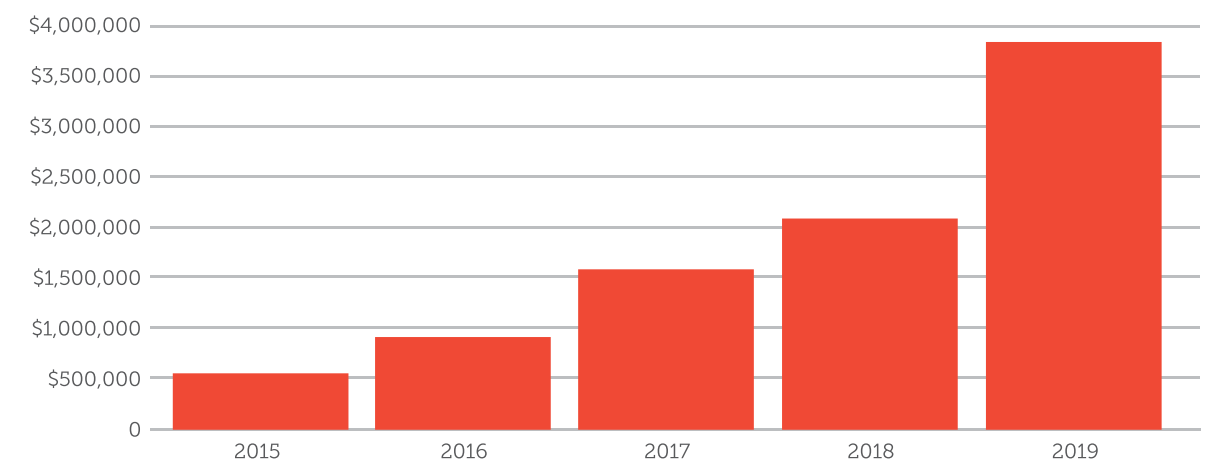


ENDOWMENT FUNDS CONTINUE TO GROW

All donations and bequests to Sunrise are invested in endowment funds in perpetuity (forever).

Every year some of the investment income is retained to ensure they grow in line with inflation and are protected against market fluctuations. The balance of the income from investments is distributed to worthy causes throughout Tairāwhiti-Gisborne.

This year our endowment funds grew by 55 percent to \$3.8 million.



GENERAL FUND

At 38 percent of total endowments and worth \$1.4 million the General Fund is our largest endowment fund.

It is from the General Fund that we do our annual granting. Because it is done by an application process, which is carefully considered by our grants committee, the General Fund will always be used to support the causes with the most need.

It's important we grow the General Fund because we don't know what our community's needs will be in the future. We've all seen how much society has changed and how quickly it is still changing, the beauty of the General Fund is that it will always be flexible to respond to those changes as and when they happen.

SPECIAL INTEREST FUNDS

Some donors want to support causes they especially care about. We work with them to establish special interest endowment funds to meet their philanthropic wishes.

- Arts
Campion College
Cancer Society Gisborne East Coast
Dialysis Tairāwhiti
Disability *
East Coast Museum of Technology *
Eastland Rescue Helicopter
Eastwoodhill Arboretum
EITSA Tairawhiti
Gisborne Boys’ High School
Gisborne Intermediate School
Gisborne Land Search and Rescue
Gisborne Rowing Club
Gisborne SPCA
Gisborne Stroke Support Group
Gisborne Women’s Refuge
Health
- Hearing Assistance
Historic Buildings
Hospice Tairāwhiti
Makaraka School
Ngatapa Rugby and Associated Sports Club *
Poverty Bay A&P Association
Poverty Bay Golf Club *
Surf Lifesaving Gisborne
Swim For Life Tairāwhiti
Tairāwhiti Community Law Centre
Waikanae Surf Lifesaving Club *
Waikereru Ecosanctuary
Waikohu Health
Wainui Surf Lifesaving Club
Waipaoa Station Farm Cadet Training Trust
Water Sports and Leisure *
Whinray Eco Trust

* Funds established 2018/2019



Many community organisations and charities desperately need an ongoing reliable source of income.

Those with a fund at Sunrise can rely on the annual income from their fund every year, funds which they don't have to apply for, to help them continue their important work.

CELEBRATING OUR DONORS

Sunrise's reason for being is to give back, by way of grants, to our community and we can only do that with the support of our donors.

Since we were launched four and a half years ago the generosity of our small community has seen our endowment funds grow to \$3.8 million and granting of \$187,785.

Leaving a legacy in your will

When making a will many people want to give something back to their community, or leave a bequest to their favourite charitable cause.

It's a common misconception that only wealthy people leave money to charity when they pass away.

Gifts in wills, or bequests, are not just made by the rich and famous. The reality is most bequests are made by ordinary, hardworking people who want to make a positive difference in their community and to other people's lives.

When his health started to deteriorate, Gavin thought hard about how he could give back to the community he loved. Bequeathing his estate to Sunrise appealed because it meant "the support would go on forever, rather than giving a lump sum that would be gone when it was gone."

Gavin chose Cancer Society Gisborne East Coast and Hospice Tairāwhiti as beneficiaries of his donation as not only did they support him, but also his wife Ngaire before she passed away.

Hospice Tairāwhiti are putting the grant they received from Gavin's fund towards their new building project.





Bob and Aileen Harris's generous donation will be an immense legacy that will make a significant difference to Tairāwhiti-Gisborne, forever.

BOB AND AILEEN'S IMMENSE LEGACY

A donation of \$1.3 million from the estate of Bob and Aileen Harris was gifted to Sunrise this year, in what is our largest bequest since we were established four and half years ago.

Bob and Aileen's son Mike Harris says his parents were "the salt of the earth who worked hard for what they achieved and this donation continues a lifetime of giving to the community".

"Mum and Dad gave very generously to the charities that were close to their heart. They volunteered their time to help a variety of different causes and have been giving significant donations to charity for some time."

Aileen was born in Tokomaru Bay and qualified as a registered nurse. Her family moved to Te Karaka, where on her own she worked to save a deposit, which the young couple would later use to build their first home.

Bob, the oldest of 8 boys and 2 girls, left school at the age of twelve to work with his grandmother on her farm at Waerenga-o-kuri.

Farming was his passion and it was while managing a farm in Dannevirke that Bob and Aileen won the Lands and Survey ballot which gave them the opportunity to buy their first farm.

They went on to buy the neighbouring farm, eventually selling both to retire and move back to Gisborne when Bob was just 45 years old.

Mike's wife Trish says early retirement didn't work for a man with Bob's tireless work ethic.

"It was only 6 months until Aileen had enough of him under her feet and kicked him back out to work!"

They bought a farm in Otoko and later the Lysnar's old farm at Okitu, as Bob had always wanted a farm by the sea. After a zoning change they developed the land, which includes Sirrah Street (Harris spelt backwards).

Mike says his parents were hard workers, lived carefully and were very astute.

"Dad had vision and I admired him for that. They worked hard for what they had." An endowment fund has been established at Sunrise in Bob and Aileen's name and their donation has been invested in perpetuity (forever).

Bob and Aileen requested that half the income from their fund be distributed to applicants in Sunrise's annual funding round to help the most needy in our community every year.

They nominated Waipaoa Station Farm Cadet Training Trust and Eastland Rescue Helicopter as beneficiaries of the remaining income.

Mike and Trish say they are chuffed Bob and Aileen's hard work will continue to benefit the community now they've gone.

"We know they wanted the capital to stay intact and grow, which it will with Sunrise."



Mike and Trish Harris are chuffed that Bob and Aileen Harris's hard work will continue to benefit the community through their endowment fund at Sunrise.

A LIFETIME OF GIVING

Maureen Potroz said it was the support of two generous people early in her life that fostered her belief of giving back.

Maureen grew up in Dunedin where she began her life-long love of music and performance. She left the South Island in her twenties and lived in many places in the North Island before moving to Gisborne 35 years ago.

It was during the early years that Maureen met two music teachers who recognised her talent and nurtured it, providing free training when she couldn't afford it. Their generosity and kindness had a big influence on the young woman, teaching her invaluable skills in music and theatre and enabling everything she's achieved in music over her life - including offers of a scholarship in England and a part on TV back in her heyday.

They also taught her the value of giving and she has been giving back ever since.

Maureen gave back to the community as her early benefactors did by training young local musicians (whether they could afford it or not), volunteering for thirty years as an official accompanist at Gisborne music

competitions and as the founding member of Centre Stage, a charitable organisation that has supported operatic and musical theatre in Gisborne since 1986.

When Maureen visited her lawyer to make arrangements for her will, after providing for loved ones, she talked to him about leaving something for the community.

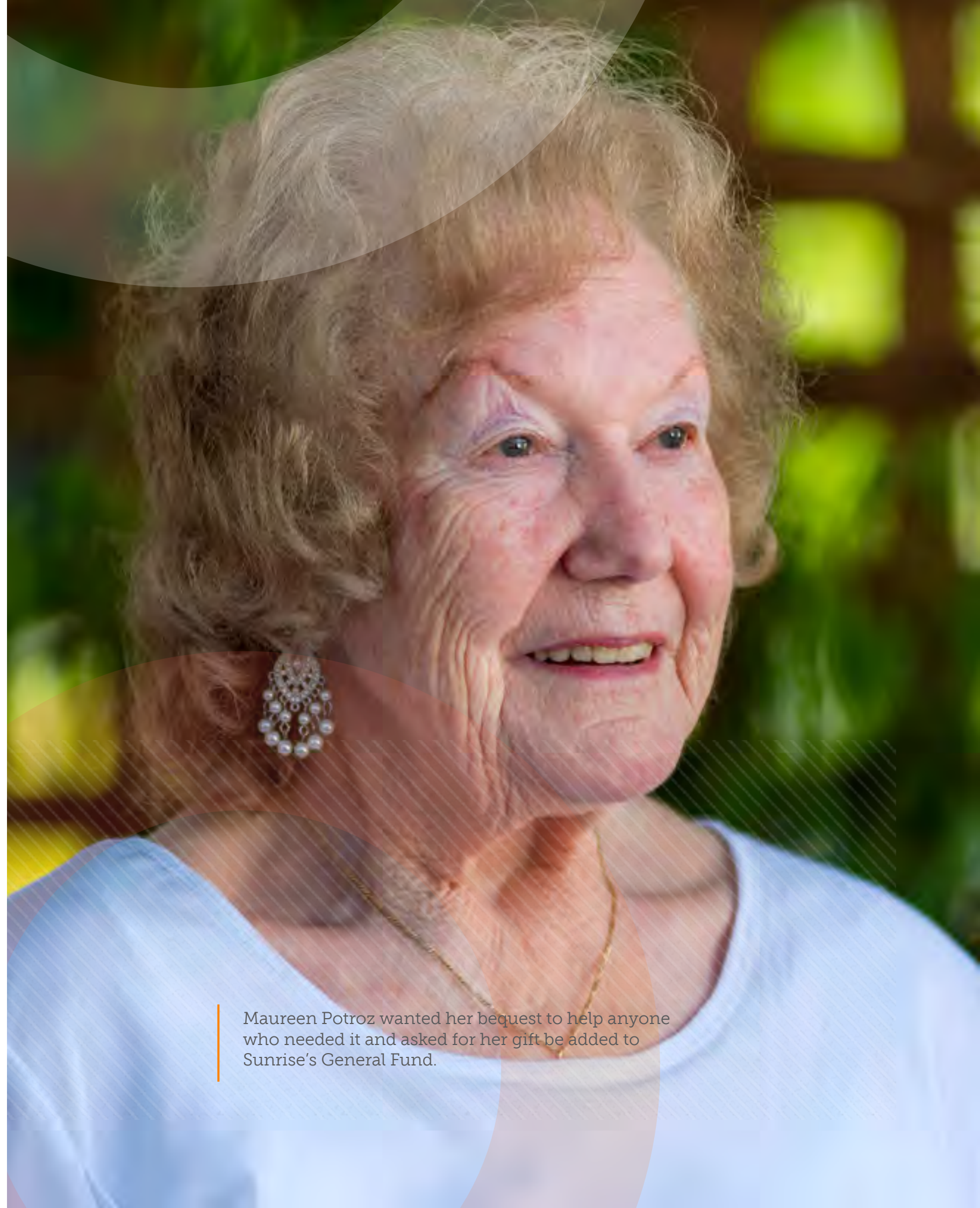
When he explained Sunrise to her, she loved the idea that a donation to Sunrise will keep on giving back to the community forever.

She said "it was really easy to set up" and decided to donate to the General Fund "because she wanted her donation to help anyone who needed it".

Sunrise received a \$14,000 gift from Maureen's estate this year. For a woman who spent her life giving back to her community, it is heartening that her gift to Sunrise will continue that legacy forever.



Maureen as a young performer.



Maureen Potroz wanted her bequest to help anyone who needed it and asked for her gift be added to Sunrise's General Fund.

DONATIONS DURING YOUR LIFETIME

Living giving means donors have the joy of seeing their donation working in our community and has the added benefit of a 33 percent tax rebate. Our living giving donors gift through one-off donations and regularly by automatic payment or Sunrise Workplace Giving.

Tui Te Ora



Hauora
Tawhiti

mb

JOHN BACKS SUSTAINABLE GIVING

Local business man John Larsen is well known for his sense of humour and generous nature, but what may not be so well known is that the much-loved local identity was born in Dannevirke, only coming to Gisborne as a young man in 1972.

In his early years in Gisborne John worked all around the district with his mobile sawmilling business. He used to set up in front of the old butter factory at Makaraka.

Just over the rail tracks sat an empty yard and he dreamed about one day owning the site. Hard work and determination saw him realise that dream when in 1989 he bought the property. It wasn't easy in those early days. He had to mortgage the place "lock, stock and barrel", borrowing 100 percent of the purchase price with interest rates at 24 percent.

He remembers naysayers predicting he wouldn't last six months, and even though the years have told a different story with his successful business standing the test of time, those words still ring in his head.

John's generous commitment to the community has seen him support a wide variety of local causes. He has sponsored, among other things, show jumping and the

Gisborne races, The A&P Show, Waipaoa Station Farm Cadet Training and Gisborne Chamber of Commerce.

When John helps a cause he believes in he invests both his time and money. He is a committee member and gold sponsor of Ngatapa Rugby and Associated Sports Club, and more recently a strong advocate for the endowment fund the club has established at Sunrise.

John attended our launch in October 2014, where Sir Stephen Tindall introduced Sunrise and the endowment model we operate. John says he picked up on the value of it immediately.

"The endowment model appeals to me as I know that donations to Sunrise are a way to give now, that will give forever".

John is a regular donor and he supports Sunrise out in the community by helping others to understand how the endowment model works.

"I know the value of money, you can't just give, give and give into a black hole. That will fritter money away and once it's gone, it's gone. Giving to Sunrise is all about sustainability, it will return to the community forever."





REGULAR AND WORKPLACE GIVING

This year 42 people gave regularly either by automatic payment or through Sunrise Workplace Giving.

Each gave what they could afford from as little as \$5 a week - through to \$100 a month.

Their combined donations add up to \$1500 a month, \$18,000 over the year.

They gave to a wide variety of causes and while many supported the General Fund, there are also many that asked for their donations to go toward their favourite charities.

The special interest funds that were supported by regular donors this year are the Arts, Campion College, Gisborne East Coast Cancer Society, Dialysis Tairāwhiti, Disability, Gisborne Intermediate, Gisborne SPCA, Gisborne Womens' Refuge, Ngatapa Rugby and Associated Sports Club, Swim for Life

Tairāwhiti, Tairāwhiti Community Law Centre and Wainui Surf Lifesaving Club.

Not only is workplace giving an easy way for people to donate a little often, it also has the added bonus of an immediate tax benefit. For every dollar donated they receive a third back as a tax credit in the same pay period.

For example, if someone donates \$7.50 every pay day, the government pays us \$2.50 (the PAYE component) and only \$5 is deducted from the donors take home pay.

Workplace giving is a very powerful way for our community to support itself and build a strong legacy for the future.



If just one percent of the Gisborne District population gave \$5 a week through Sunrise Workplace Giving that would add up to \$2 million over 10 years.

SPCA A WORKPLACE GIVING FAVOURITE

There was keen interest from several donors that they would like to donate to a fund for SPCA in Gisborne through Sunrise Workplace Giving.

A special interest endowment fund requires a \$5000 establishment donation. Because there was a fair bit of interest from donors wishing to give to our local SPCA we approached two donors we knew had an affinity to SPCA and asked if they would like to help establish a fund.

The two donors, who wish to remain anonymous, were thrilled to hear there was potential for regular giving to SPCA in Gisborne and didn't hesitate to help seed the fund.

There are now people giving every pay day to the Gisborne SPCA Fund and it is growing steadily into what we believe will become a significant fund for animal welfare in Tairāwhiti-Gisborne.

SPCA is a beloved charity, many people feel passionate about animals and their care. We are delighted we have been able to work with donors to establish and build a fund for our local SPCA.

Tracey Lloyd is giving regularly to the Gisborne SPCA Endowment Fund through workplace giving. An animal lover that has always had pets Tracey says she's used SPCA often when she's found animals she couldn't look after herself.

"I've always supported SPCA. I think people can look after themselves, but animals can't, that's where SPCA does such a great job."

Tracey has been donating every week since workplace giving was introduced to The Gisborne Herald Group in July 2017.

Every pay day she gives \$5, the price of a cup of coffee, which is automatically deducted from her wages and sent to Sunrise. In that time she has donated over \$670 and she says, "I don't even notice my donations going out and I don't miss the money, as it's not a lot each time."

Not only is workplace giving an easy way to donate a little often, it also has the added bonus of an immediate tax benefit. For every dollar donated the government pays a third back as a tax credit in the same pay period. So, as in Tracey's case, she nominated a donation of \$7.50 each pay day, the government pays \$2.50 of that, meaning only \$5 is deducted from her pay packet.

Tracey likes that she's helping to build capital in the fund and it's our local SPCA that will benefit from her donations.

"It's a big thing to me that it stays in town, that's what I like about it. You can donate directly to SPCA but not really be sure where that money is going. At least I know my donations are going to be used here."



Animal lover Tracey Lloyd donates to the Gisborne SPCA Endowment Fund every week through workplace giving. Pictured here with Glenda and canine friends Molly and "Benny 3 Legs" who is an SPCA rescue dog.



CAN YOU GIVE UP A CUP OF COFFEE A WEEK?

Billy Babbington, Maria Samoa and Linda Hardgrave have been doing just that for nearly four years.

They and their colleagues at TurangaHealth have donated \$15,000 since they started Sunrise Workplace Giving in July 2015.

Giving a little bit often, really does make a difference

This year Colin and Diane Christie decided to do something a little bit different with their annual donation to the Gisborne Rowing Club Fund, they offered to match dollar for dollar donations made by others. It appears people liked that idea and a grand total of \$6225 was donated.

SUPPORTERS

As a community foundation Sunrise can only retain a maximum of one percent of endowment value each year to cover operating costs.

Until we grow endowments to where we are self-sufficient we have been fortunate to have the support of establishment funders Eastland Community Trust, J N Williams Memorial Trust and Clark Charitable Trust, who assisted with operating costs for our first five years of operation.

We would like to acknowledge and thank Eastland Community Trust for the grant of \$400,000 they contributed this financial year which will assist with operating costs over the five financial years 2020-2024.

Burnard Bull & Co
Clark Charitable Trust
Coates Associates Ltd
Eastland Community Trust
The Gisborne Herald
Graham and Dobson Ltd
JMI Wealth
J N Williams Memorial Trust
The Tindall Foundation



Tū ora ai tātou - Living well together



THE SUNRISE FOUNDATION
PO Box 1068, Gisborne 4040
P. 06 867 7939
E. glenda@sunrisefoundation.org.nz
www.sunrisefoundation.org.nz